

Booking Open for  
1/2 BHK Luxury  
Apartment

# DEECON VALLEY

TAPOVAN - RISHIKESH NEAR LAKSHMAN JHULLA

PROJECT DULY APPROVED BY HARIDWAR DEVELOPMENT  
AUTHORITY, GOVT. OF UTTARAKHAND

Starting  
\*31 Lac



It's where the god lives



**DEECON**

INFRASTRUCTURE PVT. LTD.

...our commitment to innovate

*Fully Furnished Apartments with Possession in 60 Days*

# About the builder:-

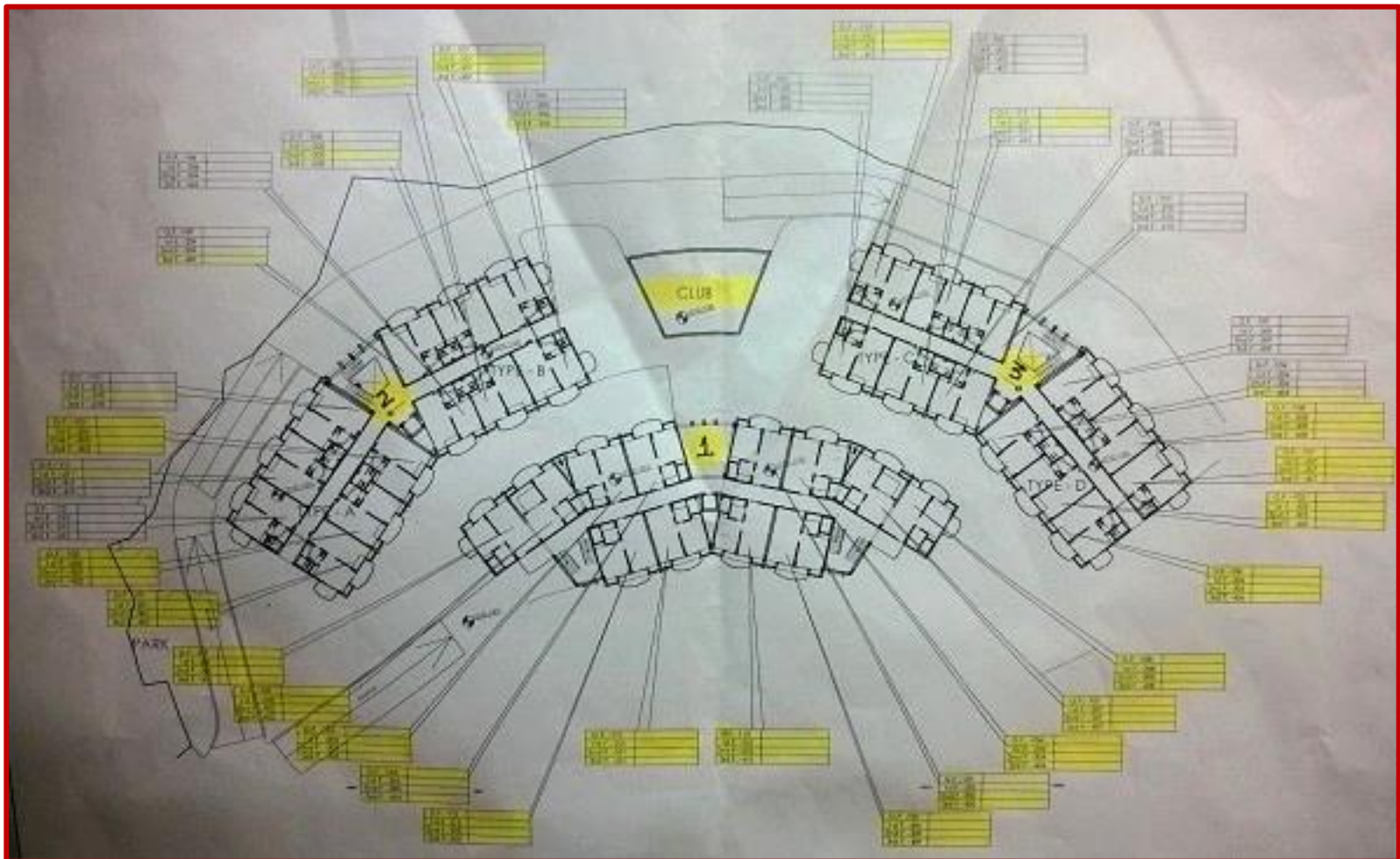


**Today Deecon Group** is a name to reckon with new age architecture marvels and excellence in construction. For over 15 year, the group has been putting sincere efforts to bring together the elements of fine living in a world that one would be proud to belong to. The group has to its credit several pioneering project that seek to revolutionize the living and working environment in an international way. To name a few are several housing complex and prestigious school building in new Delhi.

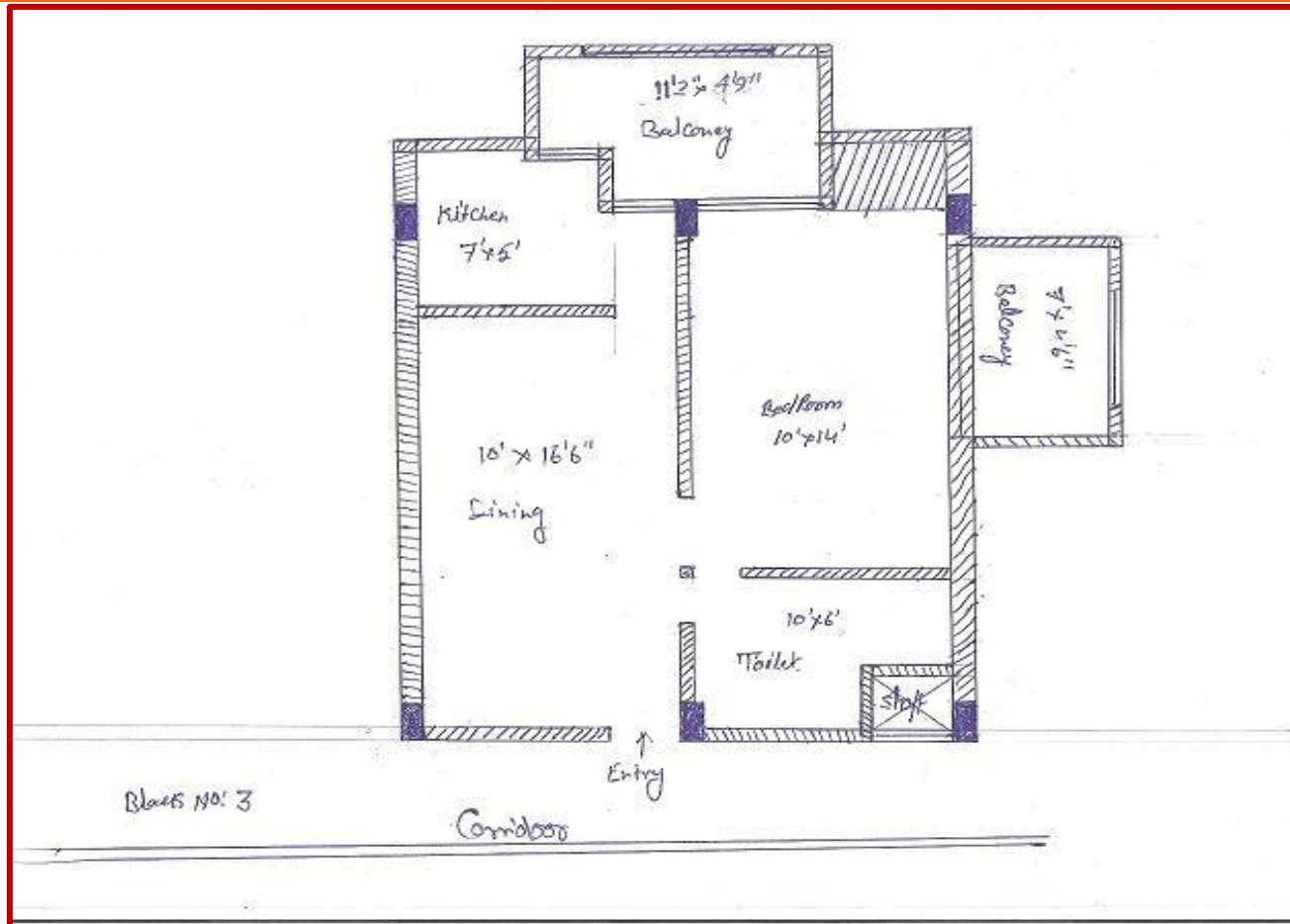
**With Deecon Valley**, the group adds another pride to its portfolio. The Endeavour is to build a world class residential complex in Rishikesh for those who want to find the true meaning of their lives. A pioneering effort to elevate the benchmarks in the real state industry.



# Site Plan :-

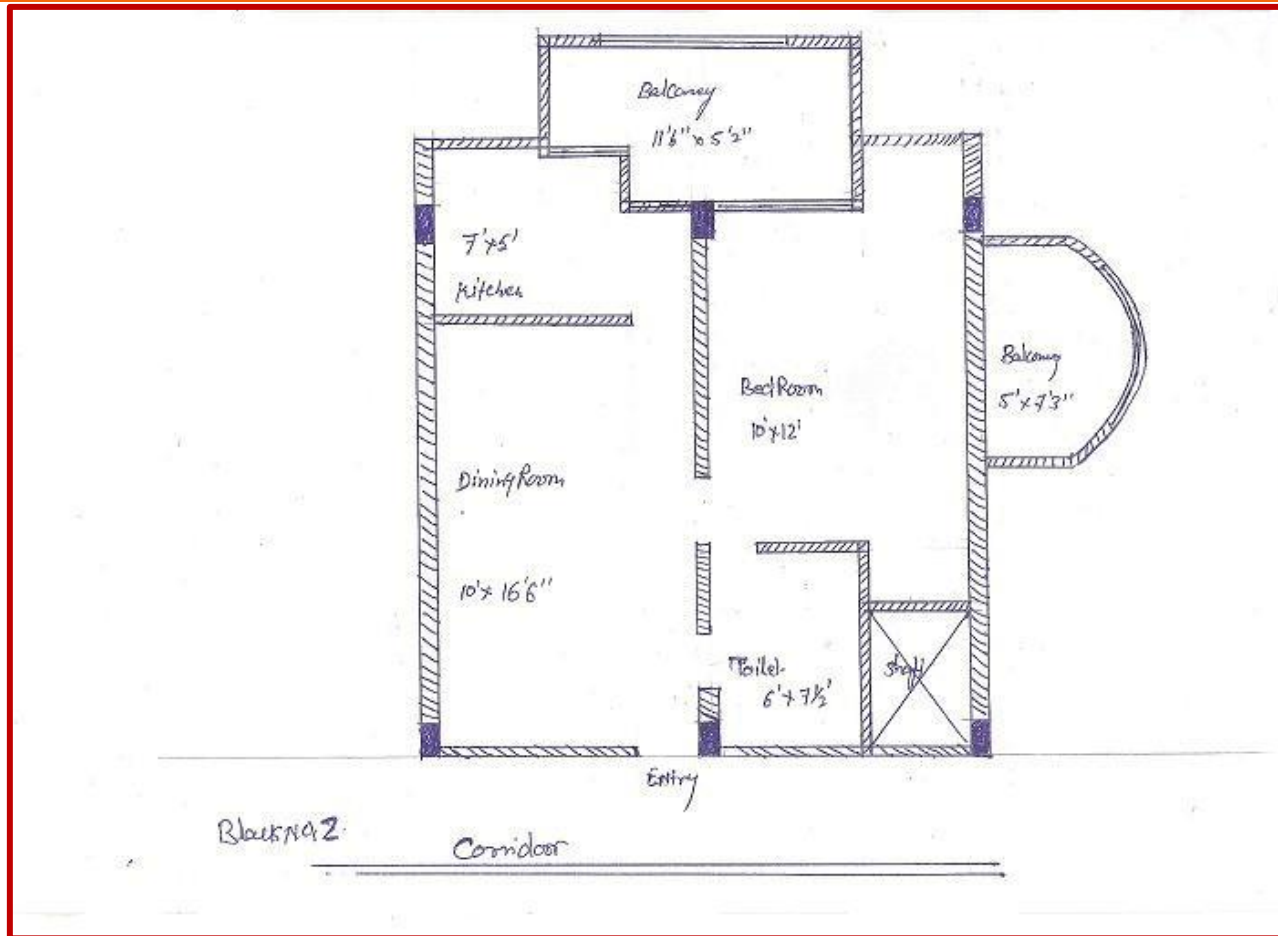


# Floor Plan :-



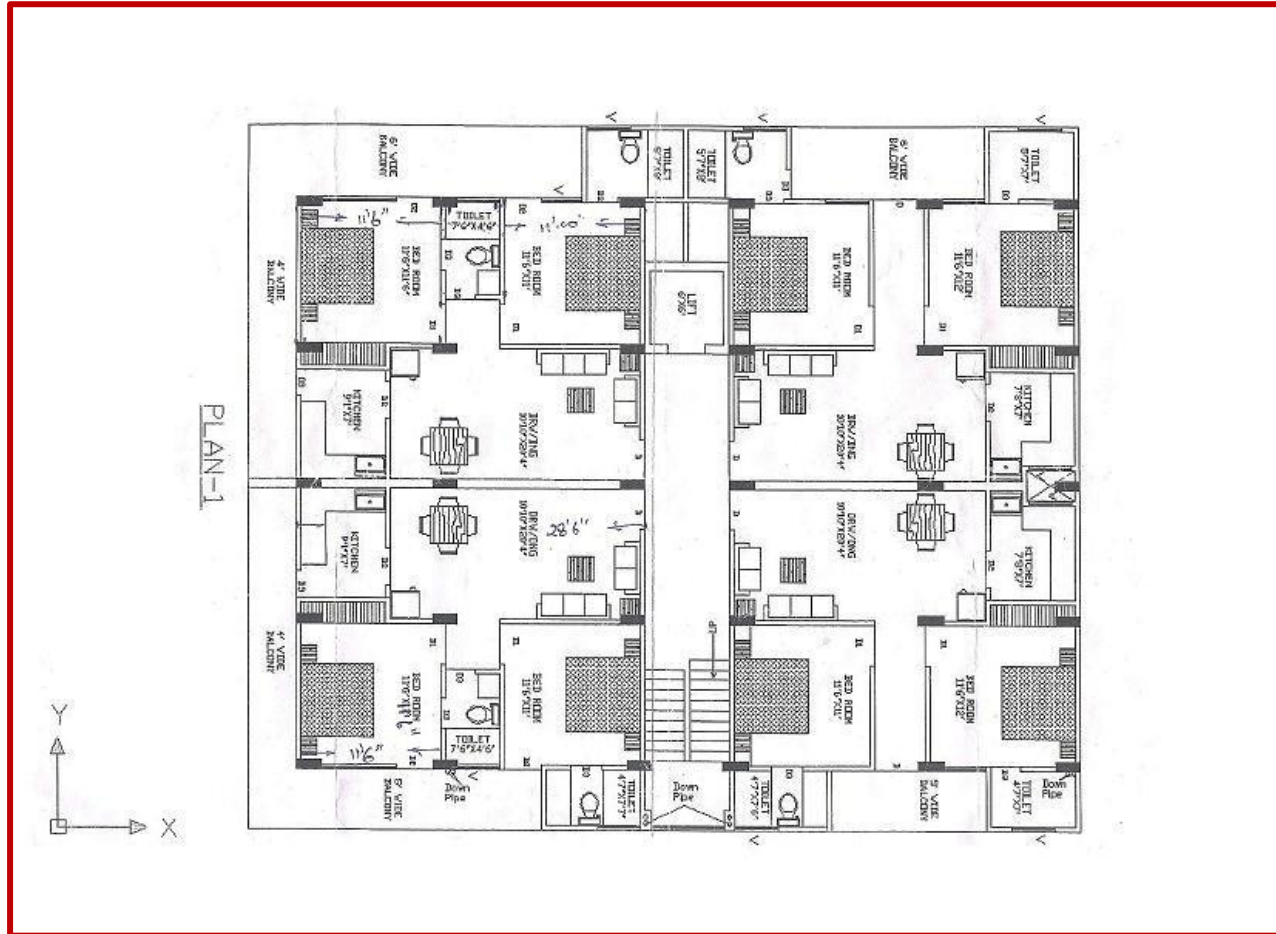
**1 BHK Floor Plan**

# Floor Plan :-



**1 BHK Corner Floor Plan**

# Floor Plan :-



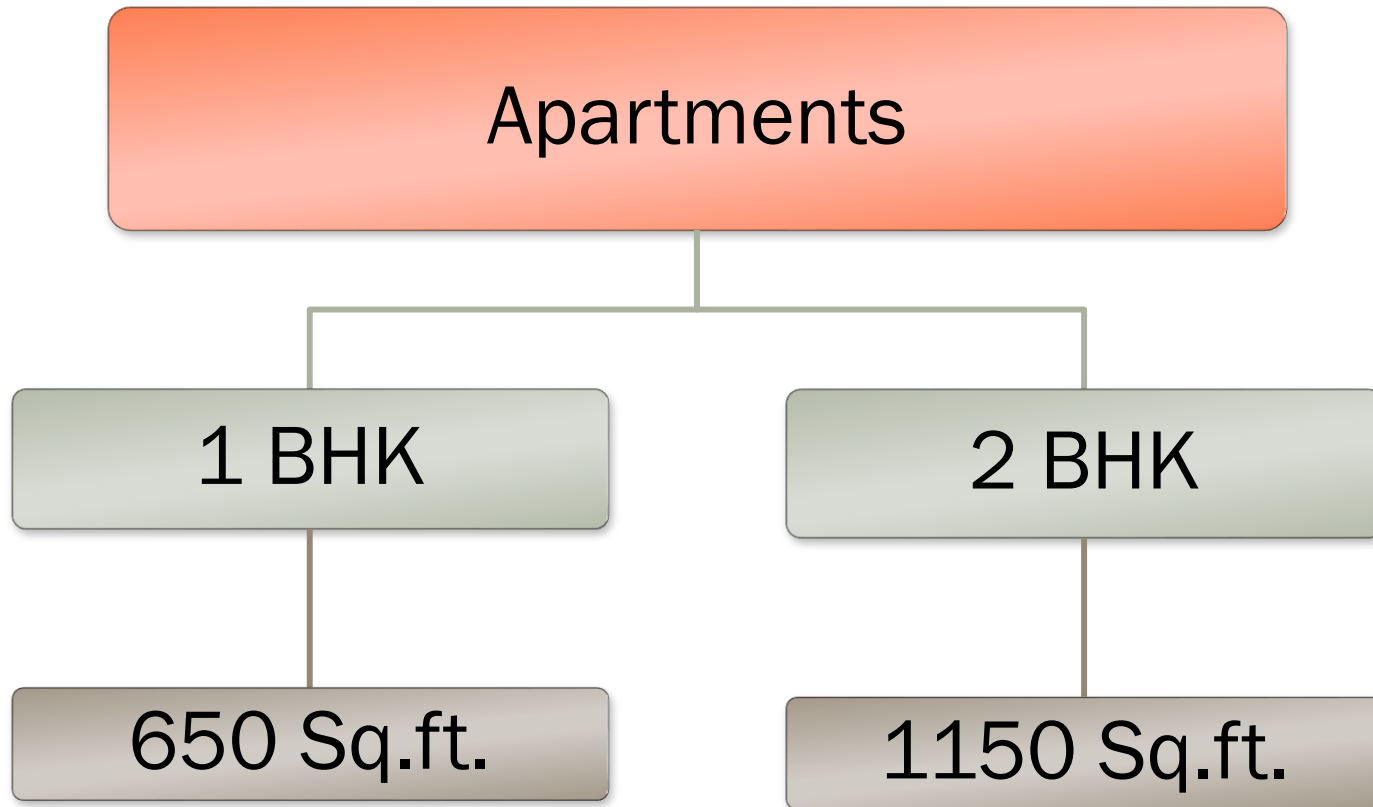
**2 BHK Floor Plan**



# Location Plan :-



# Classification :-





*Photos :-*

*Dining Room/Living Room :-*



# Bedroom :-



# *Kitchen :-*



# *Current Status :-*





# *Specifications :-*



- Ready to move in Accommodations.
- Fully furnished house with most Modern Facilities.
- Exclusive Club House within the complex.
- Swimming Pool & Sports Facilities.
- Arrangements for General Activities like Trekking, Rock Climbing, River Rafting etc.
- In-house basic health facilities & First Aid with Doctor on Call.
- ***Loan facilities are also available.***

# Payment Plan :-



## Payment Plan :-

- |                               |     |
|-------------------------------|-----|
| ∞ At the time of registration | 90% |
| ∞ On Possession               | 10% |

# Highlights :-



- Immediate Access from the National Highway.
- Close Proximity to River Ganga.
- Panaromic views of Majestic Himalayas.
- Close to Laxman Jhulla.
- Away from River Catchment Area.

# *About us !!!*



*Satyam Properties is professionally managed real estate firm based on the principles of trust, integrity & ethical business practices. The company is flourishing under the expert guidance of Mr. Y.R. Gupta. Their expert knowledge of the Uttarakhand property market visionary approach and exemplary leadership skills have earned us the reputation of a reliable Real Estate Consultant, Builder & Developer.*





# ***Thank You***

**Contact us:-**

**Y.R. GUPTA**

**+91-9837089206/9411189206**

**NIPUN GUPTA**

**+91-9837739933/9411739933**

**landline**

**+91-135-2431801**

**ADDRESS:- Satyam Properties, 42 SBM shopping  
complex, Haridwar road, Rishikesh.**

**Website:- [www.satyamproperties.com](http://www.satyamproperties.com)**

**Email :- [infosatyamproperties@gmail.com](mailto:infosatyamproperties@gmail.com)**